

AIKO Design Ltd. Tel: 0191 296 4295 www.aiko-design.co.uk

Fitting Instructions-

2 & 3 bar sets, with optional rear door guard or roller, for-

Peugeot Expert (2007 on)

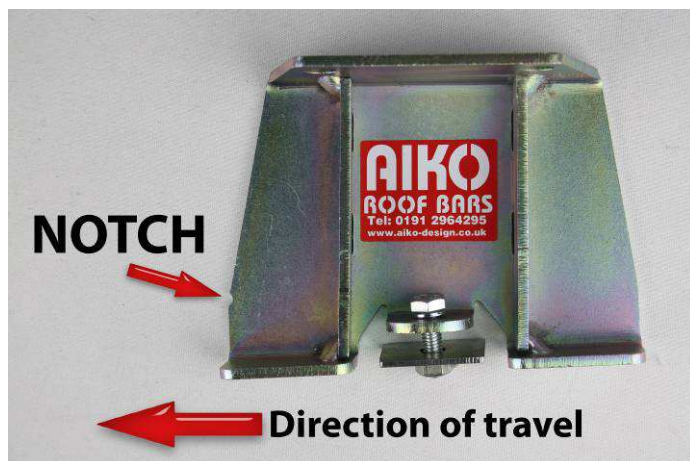
Thank you for choosing **Aiko Design** roof bars – we aim to produce a no-nonsense product so all you will need to install your bars are some 10 and 13mm spanners and a means to safely work at a comfortable height above your van without falling off (this would not only void your personal warranty, but it would make your mates laugh, too)

Here (*right*) are your brackets, shown as if you are viewing the left hand/near side of your vehicle. (Front, middle and rear brackets shown for 3 bar set- middle bracket is omitted for 2 bar sets)

Please note that the front and rear brackets are handed, and shaped to follow the line of your roof- get them in the right places and everything up there will stay level with the road, which is never a bad thing. (Middle brackets where supplied are not handed and only need the '**AIKO**' stickers facing outwards to be correctly positioned. (Plus, passers-by will be able to see where you got such fabulous roof bars)



Now, we need to talk about notches, and unfortunately not the kind you make in bed posts. Front brackets have a little notch cut into the leading outer edge- this notch needs to be facing forwards, in the direction of travel; the rear brackets have a little notch cut against the vertical brace- this needs to be on the trailing side. Here, have a shuft-

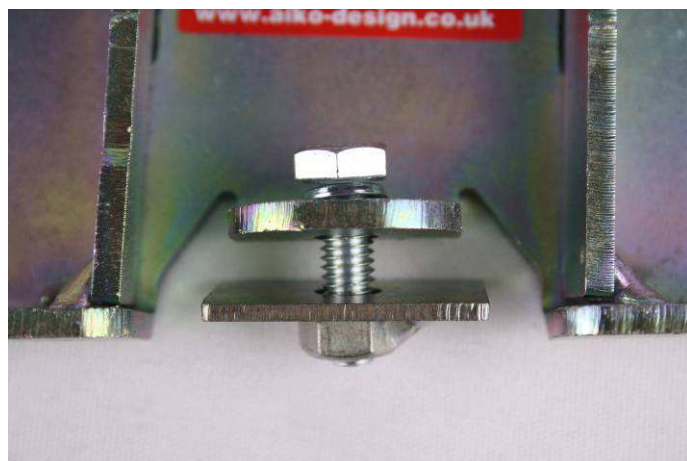


Front passenger side



Rear driver side

You can probably see how the brackets fit- they sit on top of the raised lips on your van with the welded nut plate underneath the lip and an M6 bolt and spring washer through from the top of the bracket. There's no need to over-tighten anything- once the spring washers are flat and the bracket is secure, you're good to go.



Next you can add your cross bars; these simply lay across the tops of your brackets, so making sure that you are happy that they are evenly positioned left and right, drop your A-bolts over the top and do up the M8 Nyloc nuts as shown (*left*). Stop tightening the nuts just as the bars are nipped- if you bend up the corners of the bracket at all, you've gone *way* too far- so aim for no more than 10nm torque.

Note for optional rear door guard/roller customers-

Some of our door guard or roller rear bars have a pair of adjustable rubber feet included to add further support- these feet need to be screwed into the bottom of the relevant part first, then once the bar is fitted as per the others, wind the feet down to make firm but not excessive contact with your roof, and do up the lock nuts.

Finally, make sure that everything is secure and don't forget to give your rack periodic spanner-checks over the next week or so just in case it needs any settling down on the roof and that's it; we suggest a nice cup of tea at this stage, and perhaps a biscuit.

Hopefully you've had no bother but should you get stuck with anything please give us a call and we'll be happy to talk you through it.

Cheers!

Note- Please check your vehicle manufacturer's handbook for the maximum recommended roof load